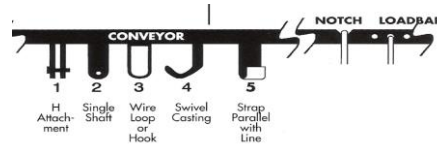




Company: _____
 Contact Person: _____
 Address: _____
 Phone: _____
 Email: _____



System Related Items:

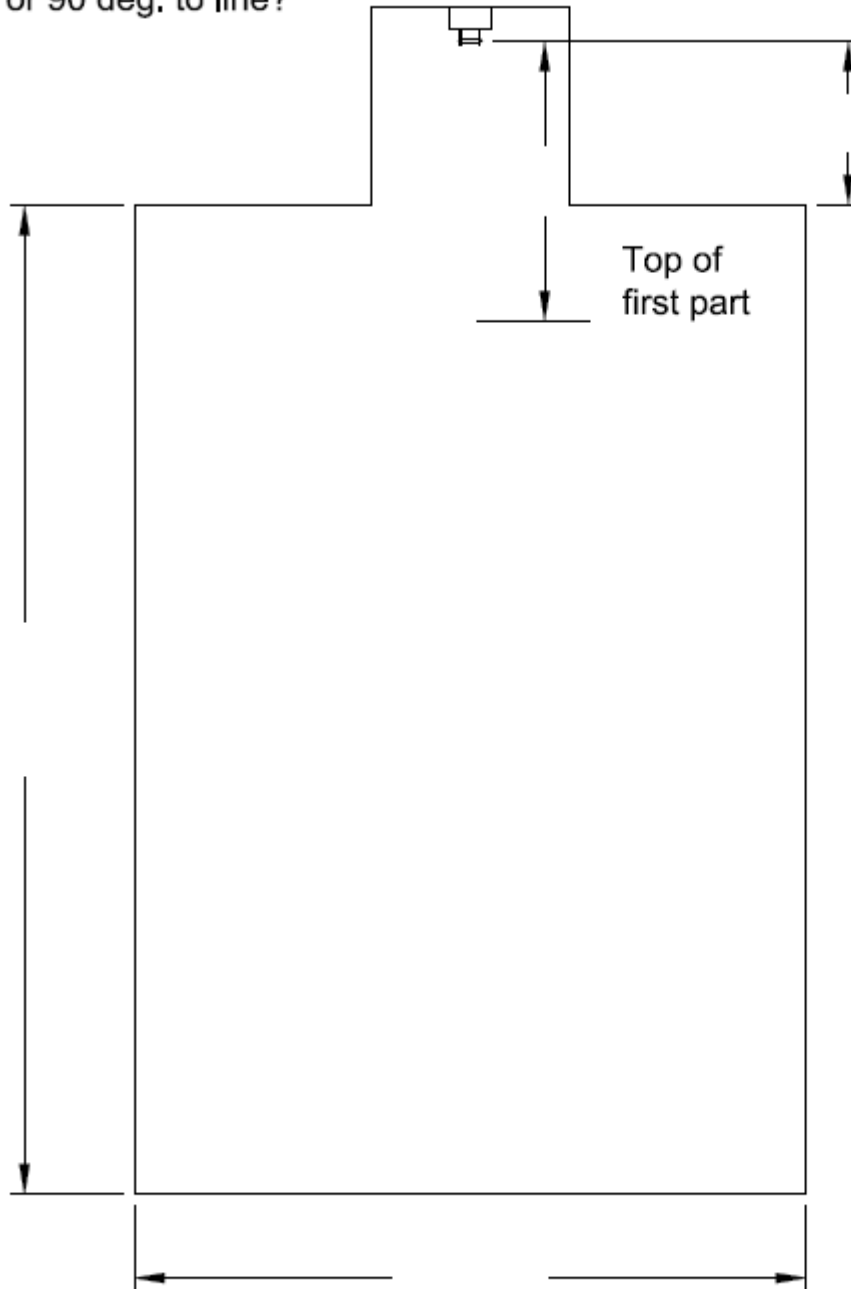
1. Conveyor pendulum number? _____ Centered on _____ Max weight per pendant _____
2. Length from hanging point to first crossbar _____
3. Powder _____ Wet _____ Dip _____?
4. Electrostatic _____ or Conventional _____?
5. Painting on both sides of the rack? ____ Yes, ____ No
6. Burn off oven used? ____ Yes, ____ No
7. Will the same rack be used for many parts? ____ Yes, ____ No
8. Are you changing hooks? ____ Yes, ____ No
9. Any inclines in the system? ____ Yes, ____ No
10. Welded Racks required? ____ Yes, ____ No
11. Length of conveyor in feet _____
12. Minimum window size of booth, oven, washer, etc. _____
13. Automatic guns or manual? _____
14. How fast does line travel? _____

Survey of Part

Part Number and Descriptions

1. Paint both sides? ____ Yes, ____ No
2. Powder _____, Wet _____, Dip _____
3. Any specific masking required? ____ Yes, ____ No
4. Holes in the part for hanging? ____ Yes, ____ No
5. Most important coverage area _____
6. Must the part be stabilized on the rack? ____ Yes, ____ No
7. Any blemishes allowed? ____ Yes, ____ No
8. Desired hanging position ____ Parallel, ____ 90 Deg, ____ 45 Deg
9. Water drainage problem? ____ Yes, ____ No
10. Pre-cleaned in high pressure washer? ____ Yes, ____ No
11. Hang on both sides of the crossbar? ____ Yes, ____ No
12. Maximum weight of the part(s)? _____

Top hook parallel
or 90 deg. to line?



Top of
first part

PRODUCTION PLUS CORP.

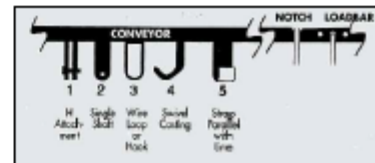
Customer:	
Date:	
Part:	PART
Drawing #:	
Drawn by:	
Revision #:	
Comments:	

This drawing and the information or data contained herein are confidential and proprietary to Production Plus Corp and are not to be copied, reproduced, duplicated, or disclosed to others in whole or in part without the prior written consent of Production Plus Corp.

Makers of



Please circle your
conveyor attachment



PRODUCTION PLUS CORP.

101 S. Business Place • Ashville, OH 43103 • Phone: 740-983-5178 • Fax: 614.492.8812 • www.MagicRack.com